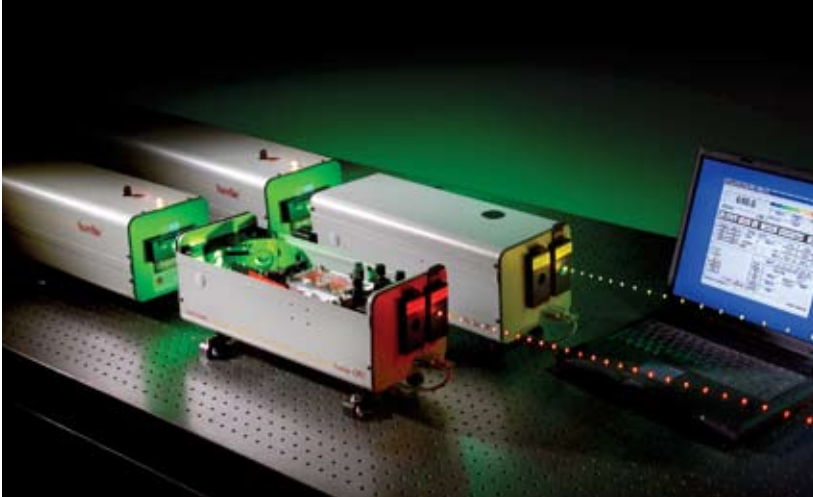


Surelite™ OPO Plus



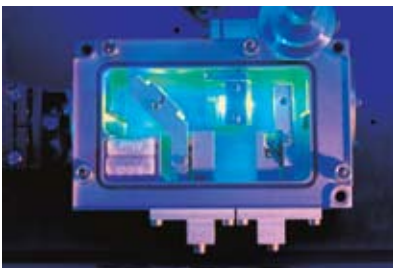
The SLOPO system - Surelite OPO pumped by a Surelite Nd:YAG laser

The Surelite OPO Plus

The ultimate design goal for the Surelite OPO Plus system was to provide broad solid state tunability, ease of operation, and efficiency. Having all of that combined with good beam quality, is what sets the Continuum's SLOPO apart.

Our extensive OPO experience has given Continuum a unique advantage in understanding the pump beam characteristics required for successful OPO performance. The SLOPO Plus can be pumped with our standard Surelite lasers, but more recently Continuum introduced the Surelite EX - a designated OPO pump source.

This Type I BBO broadband OPO boasts several unique features. A double pass optical cavity design takes advantage of the pump polarization and resonate wave for efficient optical parametric oscillation, and a fully hermetically sealed oscillator ensures crystal longevity. One inclusive mirror set gives complete access to the signal and idler tuning range and optional computer control means truly hands free operation.



Surelite OPO Plus Sealed Oscillator

Applications:

- * Photoacoustic Imaging
- * Biological Sample Excitation
- * Spectroscopy
- * Diode Laser Simulation
- * Two-color Particle Image Velocimetry

Features and Benefits

Designated OPO pump lasers to enhance performance and offer a complete system solution

Side pump or end pump configuration for convenient set-up

Idler-resonant oscillator for good OPO beam quality

Hermetically sealed oscillator to ensure crystal longevity

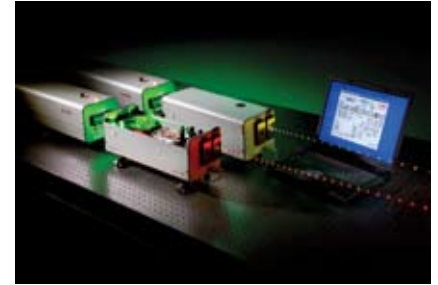
IRO option for simultaneous access to residual frequencies to allow for secondary experiments

Built-in safety Interlocks for smooth and safe operation in every lab

OPO in 532 nm or 355 nm configuration to provide wavelength of interest

Surelite OPO Plus Specifications

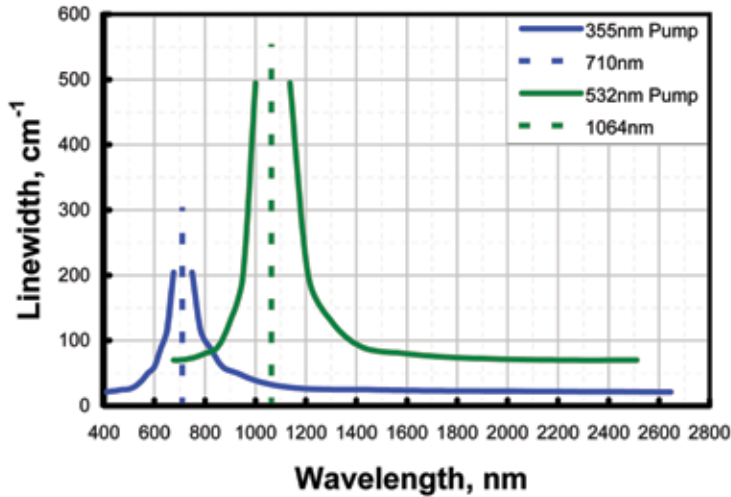
NEW



532 nm Pump Source	SL I-10	SL I-20	SL II-10	SL III-10	SL EX
Pump Energy (mJ)	200	160	300	400	375
Energy at Peak (mJ)	65	50	95	120	135
Repetition Rate (Hz)	10	20	10	10	10
Tuning Range (nm)	680-2500				
Signal & Idler Pulswidth (nsec)	3-5				
355 nm Pump Source	SL I-10	SL I-20	SL II-10	SL III-10	
Pump Energy (mJ)	100	100	160	200	
Energy at Peak (mJ)	35	35	55	70	
Repetition Rate (Hz)	10	20	10	10	
Tuning Range (nm)	410-2500				
Signal & Idler Pulswidth (nsec)	3-5				

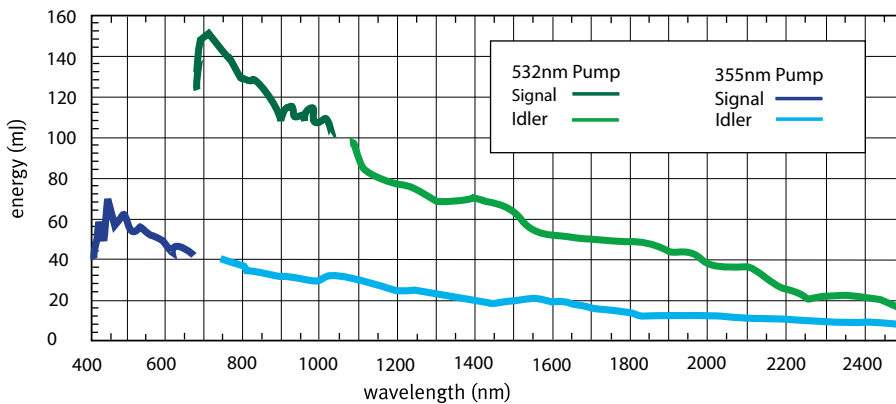
Surelite OPO Plus - Linewidth Curve

Pump: SLII-10, 300 mJ at 532 nm, 160 mJ at 355 nm



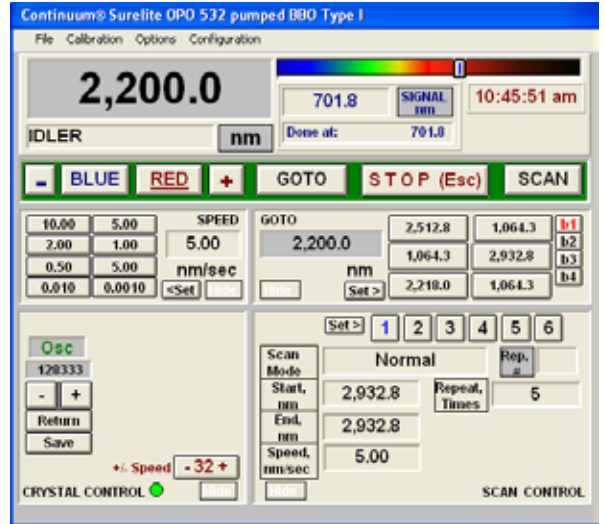
Surelite OPO Plus - Typical Data

Pump: SL EX, 375 mJ at 532 nm & SL II-10, 160 mJ at 355 nm



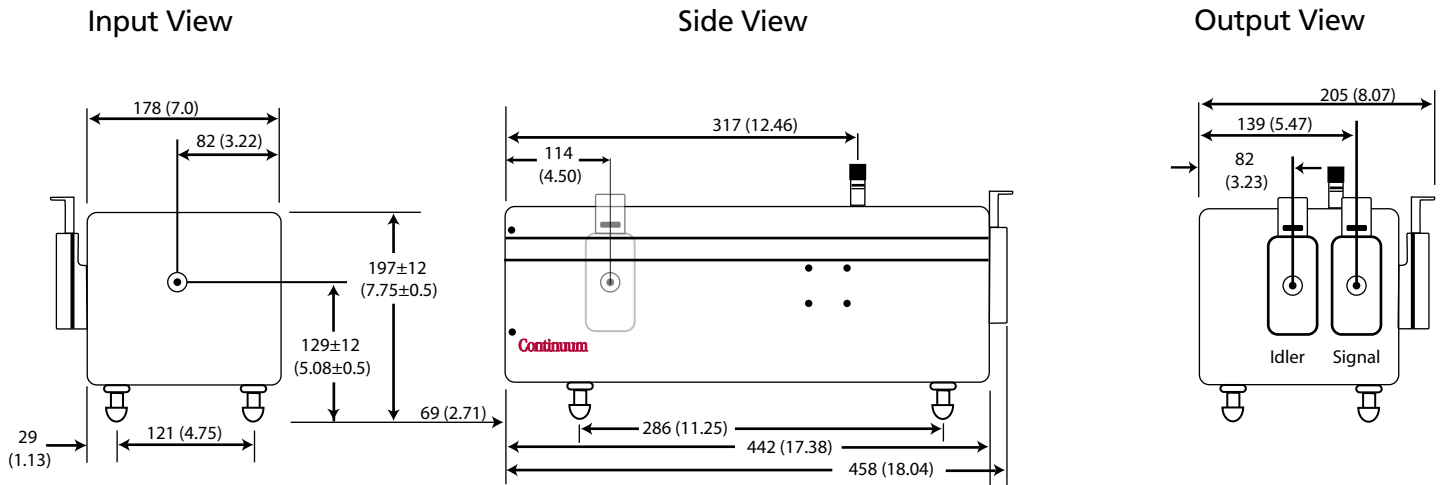
PC Control Option

The PC Control option gives full control of all scanning features via a simple Windows® platform. Input your wavelength and scan range of choice, select the scan speed and the SLOPO computer control will ensure optimal performance every time. This option also provides a link between both laser and lab instrumentation - an essential feature for system automation and/or data collection. The standard SLOPO comes with a micrometer for manual control giving easy access to the broad OPO tuning range.



Surelite OPO Plus Physical Layout

All dimensions are in mm (inches)



Continuum
 3150 Central Expressway, Santa Clara, CA
 Tel (408) 727-3240 Fax (408) 727-8237
 USA Sales (866) 532-1064
 www.continuumlasers.com

992-0024, Rev. D 09/11



© 2011 Continuum

Continuum®
 The High Energy Laser Company™